

WILLOW RUN

4 HEMLOCK CRESCENT

AYLMER | ONTARIO

TOWNHOME

PREMIUM
SPECS



THE DETAILS

PRICE	\$629,000
CLOSING DATE	May 8, 2025
LOT NUMBER	46B
BEDROOMS	3
BATHS	2.5
GARAGE	1
DRIVEWAY	17'
SQ FT	1,831
MODEL	Semi

Emma Smith SALES PROFESSIONAL

519.409.1474 | emma.smith@hayhoehomes.com



[WWW.HAYHOEHOMES.COM](http://www.hayhoehomes.com)

Price, products, colours & features are subject to change without notice. E. & O. E. DATE MAR 2025

HAYHOETM
— HOMES —

WILLOW RUN

SITE PLAN

4 HEMLOCK CRESCENT | AYLMER ON



exterior features

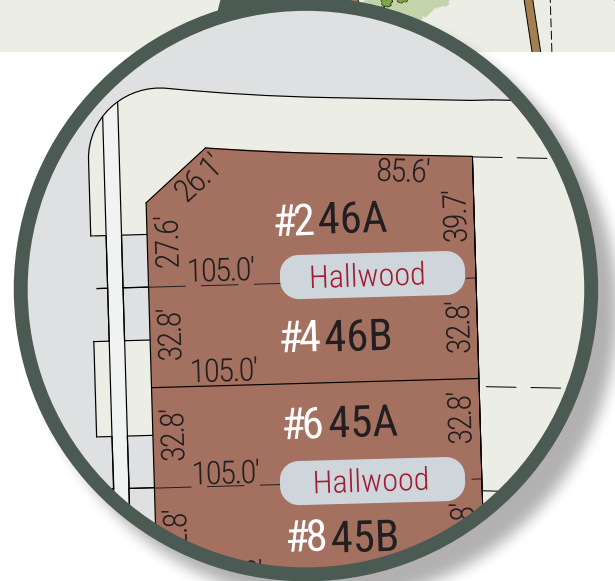
KEYLESS ENTRY

TREATED WOOD DECK

BBQ GAS LINE

ASPHALT DRIVEWAY

WALKING TRAILS



WILLOW RUN

4 HEMLOCK CRESCENT

MAIN FLOOR

1,225 sq ft

features

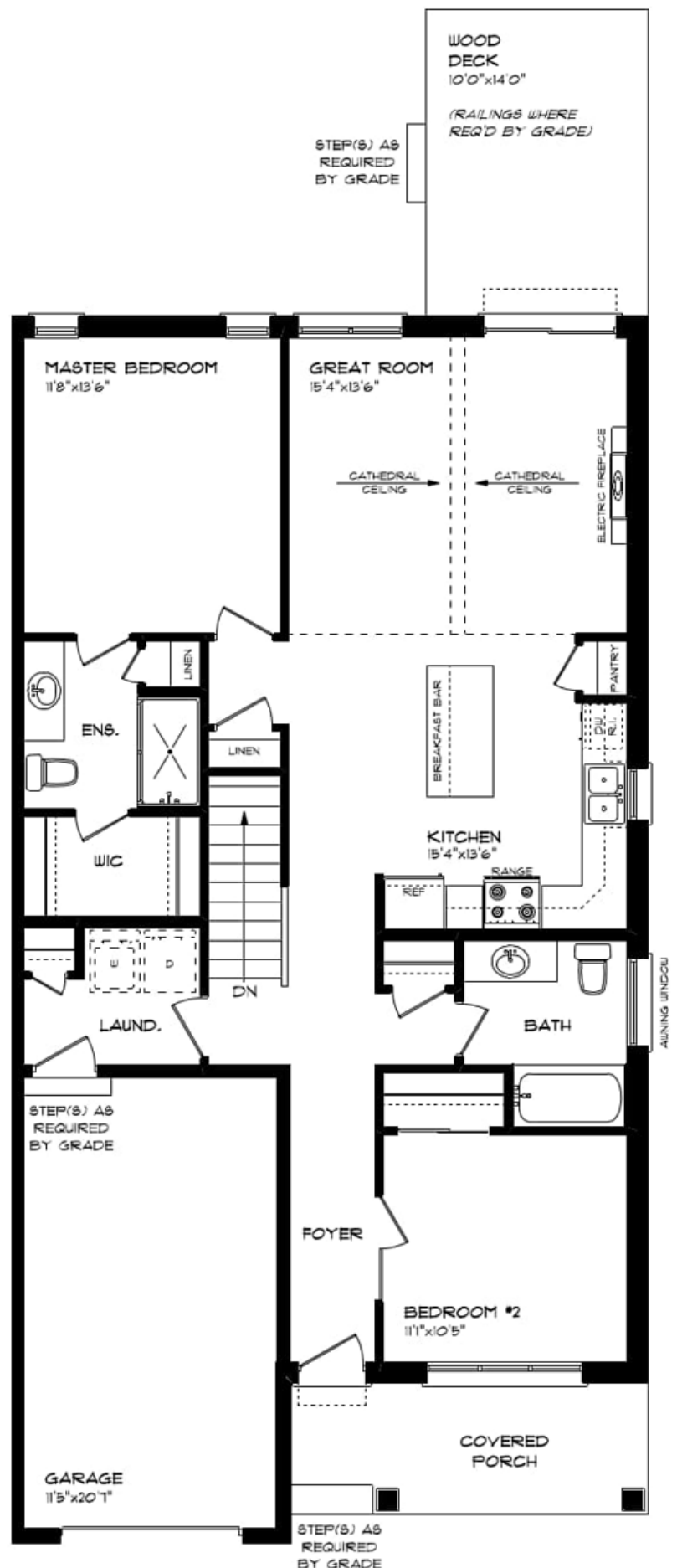
MAIN FLOOR LAUNDRY

QUARTZ COUNTERTOPS

KITCHEN BACKSPLASH

DOUBLE CAR GARAGE

ELECTRIC FIREPLACE



WILLOW RUN

4 HEMLOCK CRESCENT

LOWER LEVEL

606 sq ft

features

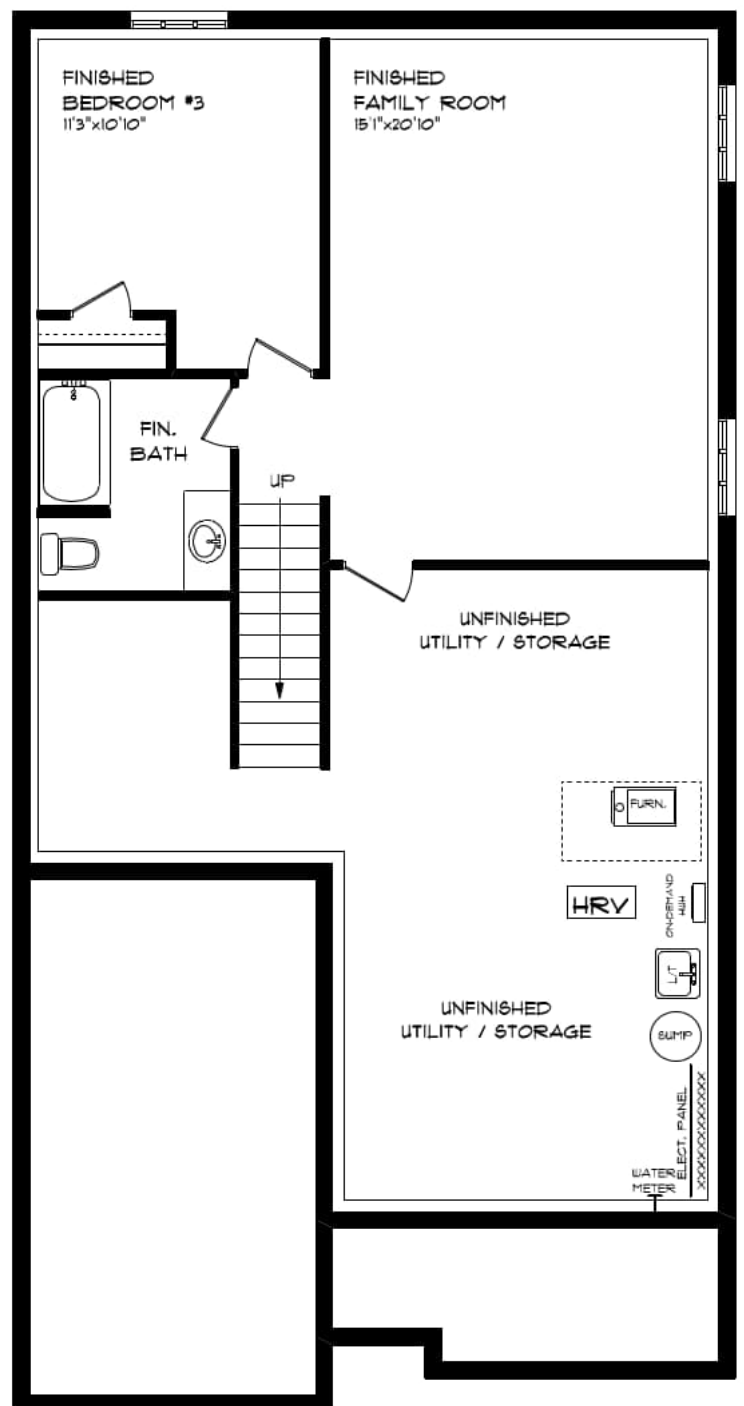
CARPET FLOORING

AIR CONDITIONING

GAS FURNACE WITH HRV

HUMIDIFIER

NEW HOME WARRANTY



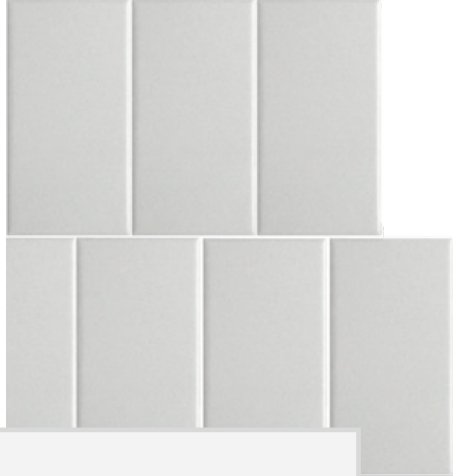
WILLOW RUN

4 HEMLOCK CRESCENT



INTERIOR FINISHES

KITCHEN BACKSPLASH



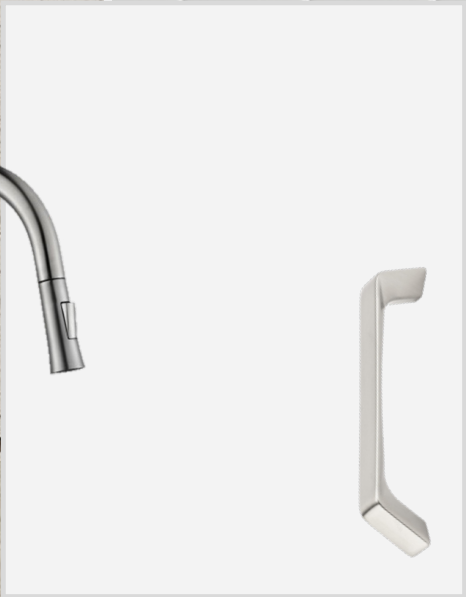
QUARTZ KITCHEN COUNTERTOPS



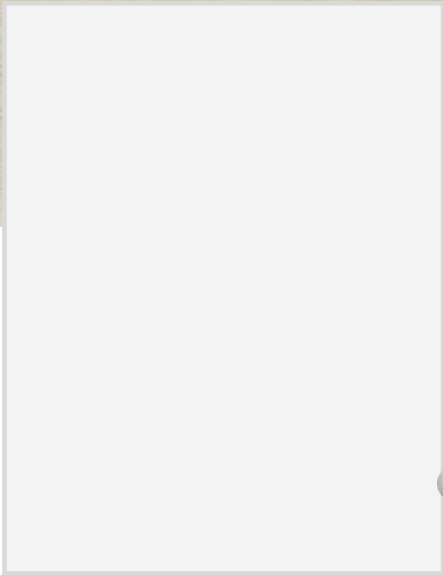
LUXURY VINYL PLANK



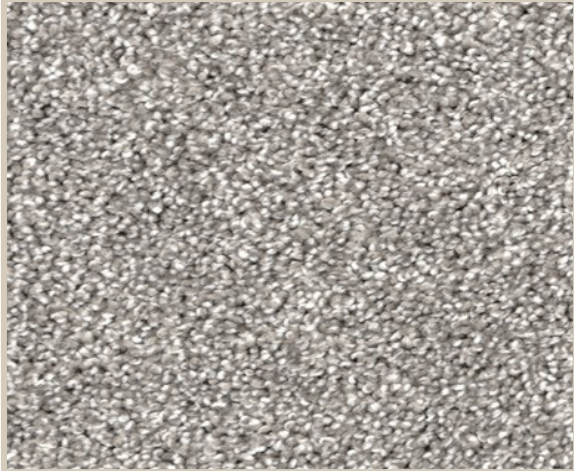
MELAMINE KITCHEN
CABINETY



MELAMINE VANITY
CABINETY



LAMINATE VANITY
COUNTERTOPS



CARPET