

WILLOW RUN

24 HEMLOCK CRESCENT

AYLMER | ONTARIO

SEMI-DETACHED



THE DETAILS

PRICE	\$599,000
CLOSING DATE	July 24, 2025
LOT NUMBER	41B
BEDROOMS	2
BATHS	2
GARAGE	1
DRIVEWAY	17'
SQ FT	1,225
MODEL	Semi-Detached

Emma Smith SALES PROFESSIONAL

519.409.1474 | emma.smith@hayhoehomes.com



[WWW.HAYHOEHOMES.COM](http://www.hayhoehomes.com)

Price, products, colours & features are subject to change without notice. E. & O. E. DECEMBER 28, 2024

HAYHOETM
HOMES

WILLOW RUN

SITE PLAN

24 HEMLOCK CRESCENT | AYLMER ON



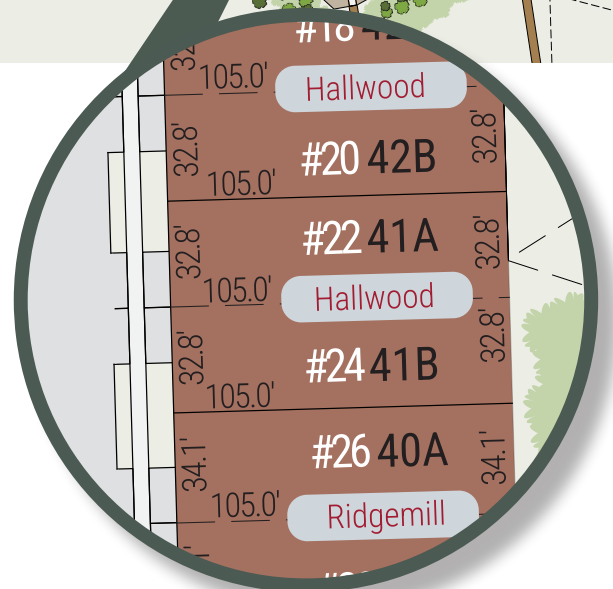
exterior features

KEYLESS ENTRY

TREATED WOOD DECK

ASPHALT DRIVEWAY

WALKING TRAILS



WILLOW RUN

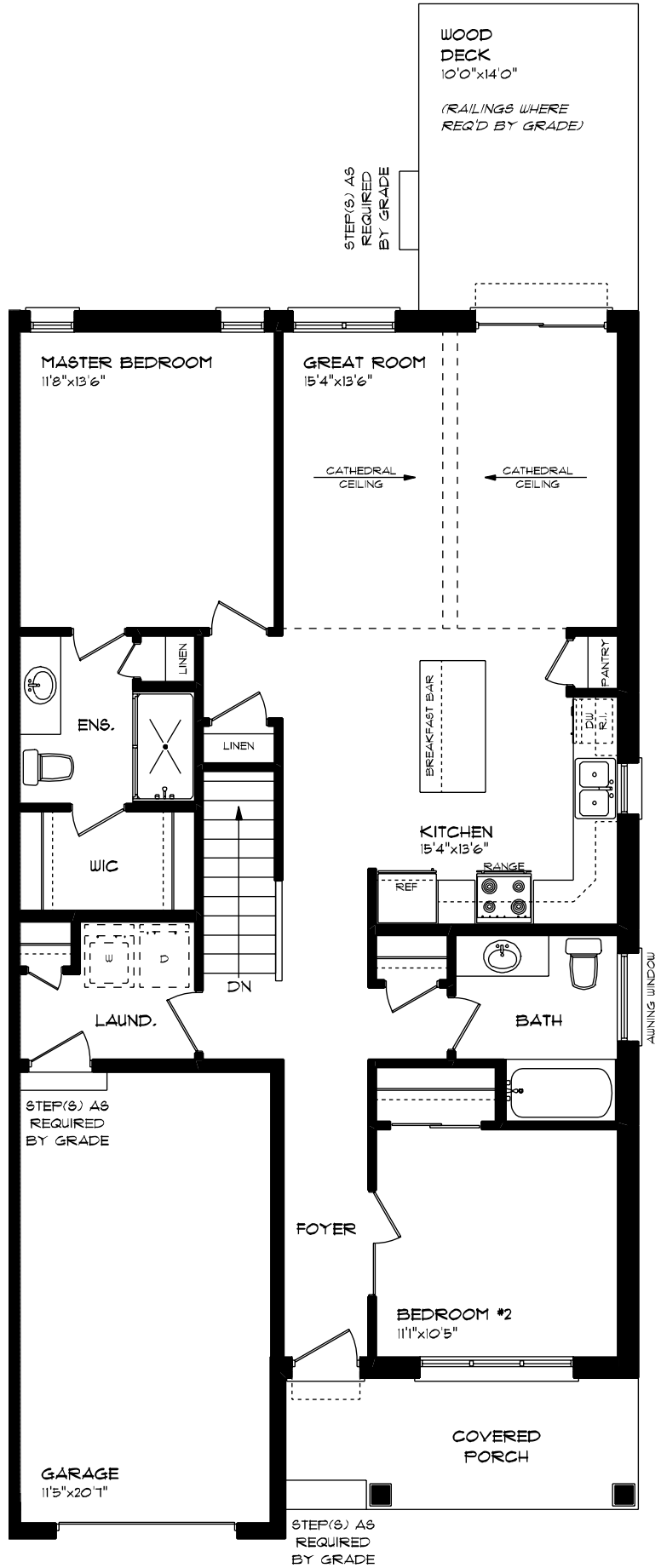
24 HEMLOCK CRESCENT

MAIN FLOOR

1,225 sq ft

features

- MAIN FLOOR LAUNDRY
- QUARTZ COUNTERTOPS
- VINYL PLANK FLOORING
- KITCHEN ISLAND



WILLOW RUN

24 HEMLOCK CRESCENT

LOWER LEVEL UNFINISHED

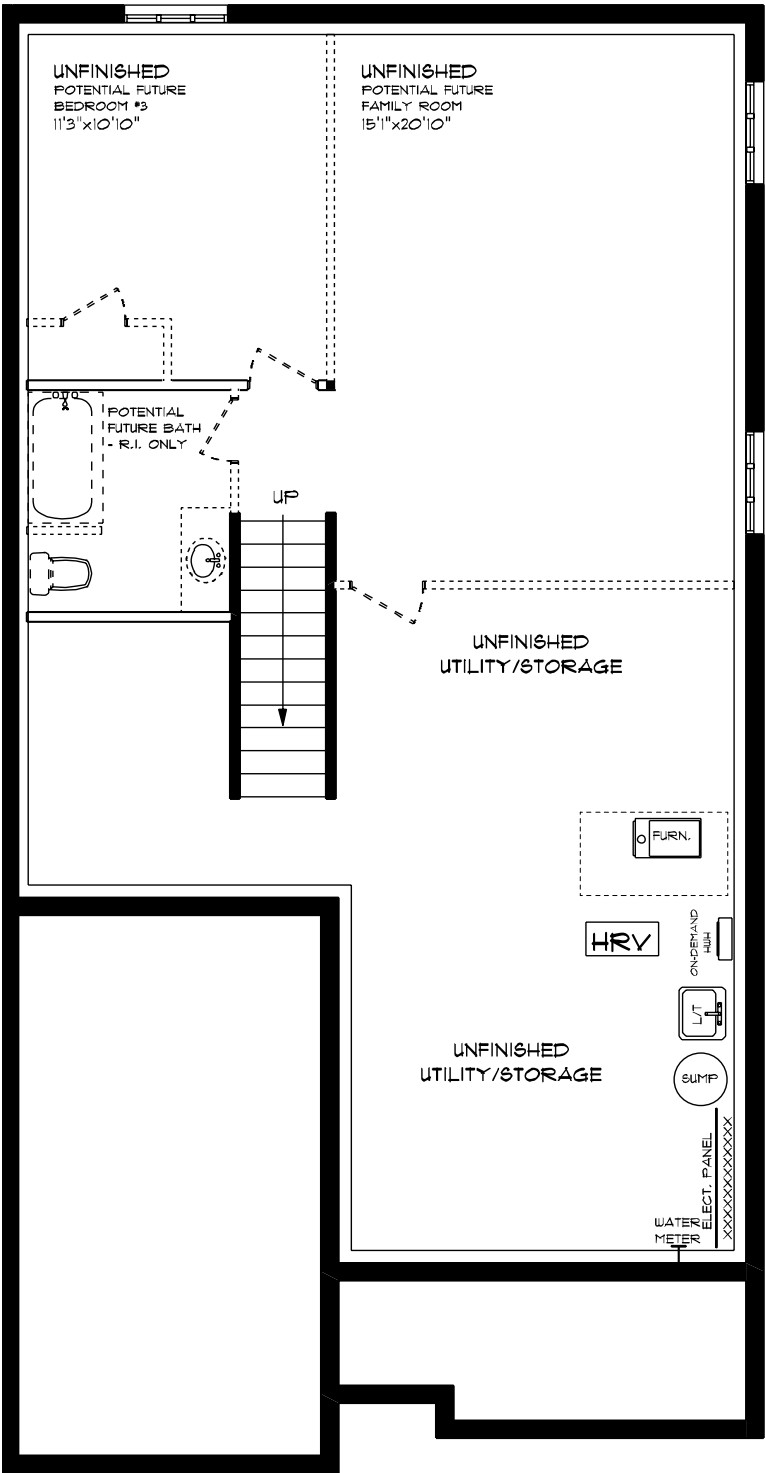
features

AIR CONDITIONING

GAS FURNACE WITH HRV

HUMIDIFIER

NEW HOME WARRANTY



WILLOW RUN

24 HEMLOCK CRESCENT

INTERIOR FINISHES



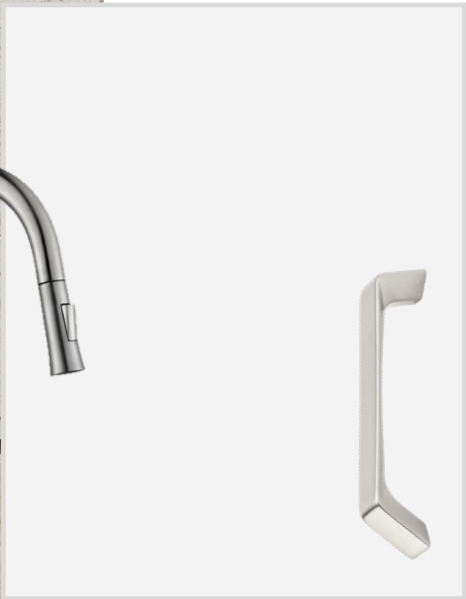
QUARTZ KITCHEN COUNTERTOPS



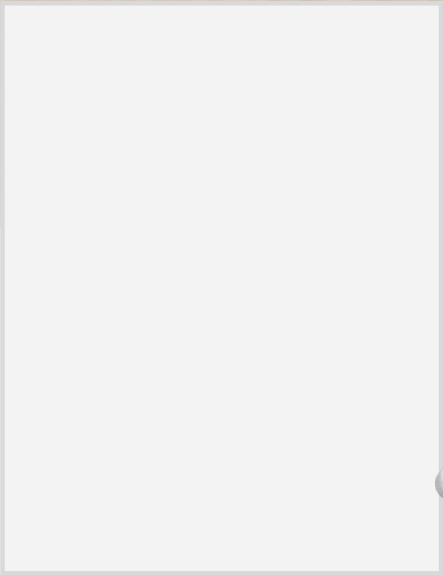
LUXURY VINYL PLANK



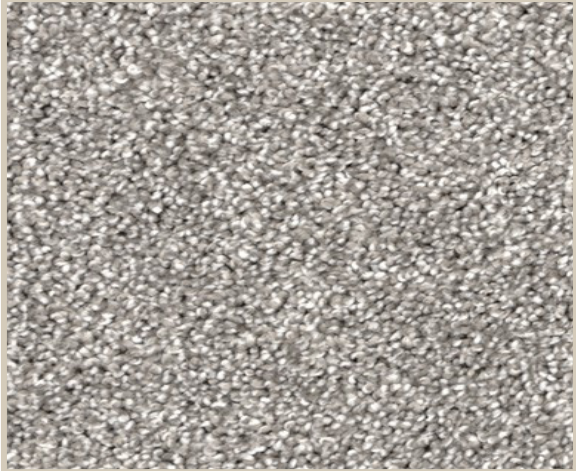
MELAMINE KITCHEN
CABINETRY



MELAMINE VANITY
CABINETRY



LAMINATE VANITY
COUNTERTOPS



CARPET